

L'esprit de l'escalier

for

Bb Bass Clarinet

Bassoon

Cello

Ashley Floyd

2009

Program Notes:

L'esprit de l'escalier is a French term meaning "wit of the stairs." It refers to the failure to come up with a clever response until after it is too late. My trio gives each player plenty of opportunities to both lead the conversation, as well as arriving at clever phrases when it is too late and often inappropriate.

Approximate Performance Time: ca. 6'

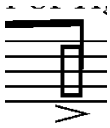
Instrumentation:

Bb Bass Clarinet: the score is transposed throughout

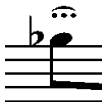
Bassoon: The player must add an extension to the bell joint to extend the range to a low "A"

Cello: The cello uses an alternate tuning involving tuning the low "C" string down a minor third to a low "A." The score and performance part are left "untransposed" in respect to using the lowest "A" string, all pitches sound as written. It is left to the performer to develop fingerings as they see fit.

Performance Indications:



Instruction for cellist to strike fingerboard with R.H. palm



Thrown Bow, as opposed to measured ricochet.



For Bassoon and Bass Clarinet, diamond noteheads are accompanied with a *n* to signify subtone playing. For the cellist, solid diamond noteheads signify a deliberate fingering of notes with the L.H. as to sound the written pitches. For the cellist, this deliberate fingering often alternates with a *col legno battuto* articulation.



Instruction for the Bassoonist to use a hard tonguing on the reed.

s.t. - sul tasto

s.p. - sul ponticello

ord. - ordinario/ cancels previous indications

n.v. - without vibrato

c.l.b. - col legno battuto

n - niente/used in conjunction with diamond noteheads to indicate a subtone

Transposed Score

L'esprit de l'escalier

Ashley Floyd

With light-hearted frustration ♩ = 76

Bass Clarinet

Bassoon

Cello

Low "A" extension

sfz > mf

ff

sfz

f

ff

sfz

snap pizz.

pizz.

Strike fingerboard with palm of right hand

Tune "C" string down m3 to "A"

♩ = 76

B. Cl.

Bsn.

Vc.

3

6

mf < f > p

pizz.

arco

s.t. n.v.

B. Cl.

Bsn.

Vc.

5

3

3

mf

sfz

mf

sfz


mf


pizz.

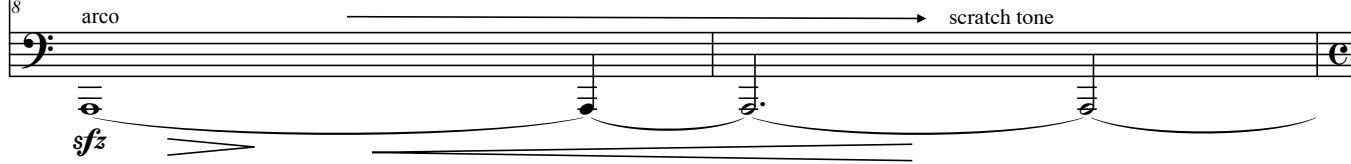
B. Cl.  7 3

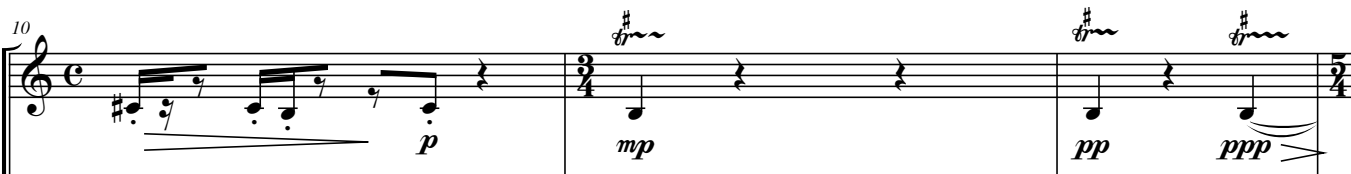
Bsn.  7 5 3

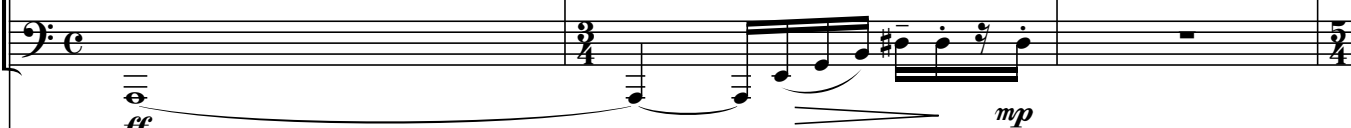
Vc.  7 3

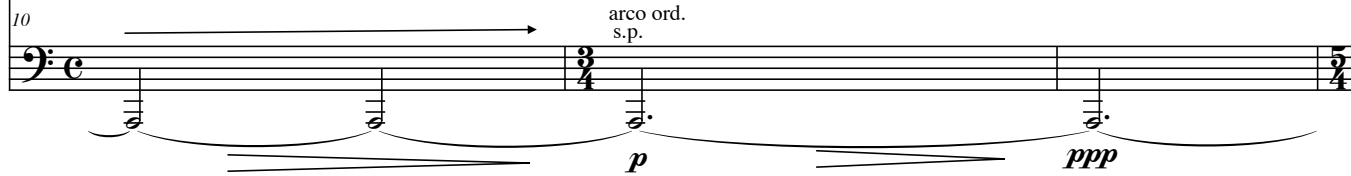
B. Cl.  8 *pp* < *f*

Bsn.  8 *ppp*

Vc.  8 *sfz* arco scratch tone

B. Cl.  10 *p* *mp* *pp* *ppp*

Bsn.  10 *ff* *mp*

Vc.  10 *p* *ppp* arco ord. s.p.

13

B. Cl. *n* (sub-tone) *n* *sempre*

Bsn. *pp* *mf* *ff*

Vc. *fpp*

n.v.
s.t.

15

B. Cl. *5* *5* *5* *5*

Bsn.

Vc. *5*

17

B. Cl. *6* *3* *3* *3*

Bsn.

Vc. *f* *pizz.* *f*

19

B. Cl.

Bsn.

Vc.

ff

sfz

ff

arco

pp

22

B. Cl.

Bsn.

Vc.

f

n

f

pp

cresc.

24

B. Cl.

Bsn.

Vc.

f

n

f

ff

ff

sfz

f

B. Cl. 26

Bsn. 26

Vc. 26

sfz

B. Cl. 28

Bsn. 28

Vc. 28

Slower ♩ = 60

ff

pp

p

espress.

ff

pp

Tempo I

B. Cl. 32

Bsn. 32

Vc. 32

pp

mf

mp

ff